

MACDEP^ENEWS

MONTANA ASSOCIATION OF COMMUNITY DEVELOPMENT EXTENSION PROFESSIONALS

August 2016

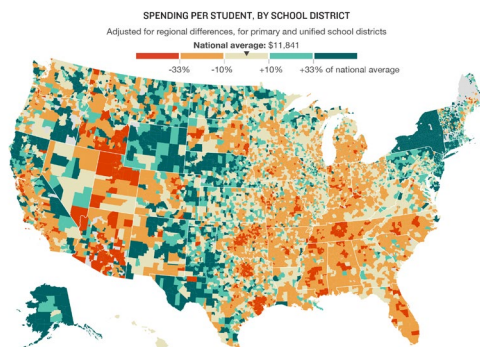
Reports & Resources

President's Corner

Why America's Schools Have a Money Problem

NPR | [READ STORY](#)

Across the U.S. there is a tale of two types of education, with kids the same age, in the same grade attending schools that try to educate them with wildly different resources. On average, New York, Alaska, and Wyoming each spent more than \$17,000 per student in 2013, while California, Oklahoma and Nevada spent roughly half that. Below, you can see that remarkable variation for yourself — and find out what schools are spending where you live.



The **Montana State University Extension Community Development (CD) Update** will take place Sept. 9-10 at Big Sky Resort. We will start at noon on the 9th with a lunch meeting with [NACDEP](#) and [CDS](#) Board members. Don't miss this tremendous opportunity to spend two days with some of the **leading CD educators** from across the US presenting on their leadership, entrepreneurship, local government and related programs. Email commdev@montana.edu for more information.

The **FREE MSU Extension CD Occasional Webinar Series** continues on Mon. Aug. 15 at 1:30 PM (Mountain Time) featuring **Ray Rasker** of [Headwaters Economics](#) who will give a demonstration of two free online tools for producing socioeconomic

The Global Impact of Air Conditioning: Big and Getting Bigger

AlterNet | [READ STORY](#)

A [paper](#) published in the Proceedings of the National Academy of Science examines the enormous global potential for air conditioning. As incomes rise around the world and global temperatures go up, people are buying air conditioners at alarming rates.

profiles: the [Economic Profile System](#) and [Populations at Risk](#).
Join the webinar [here](#).

-Paul Lachapelle
MACDEP President

Upcoming Events

IARSLCE 16th Annual Research Conference

September 26-28, 2016
New Orleans, LA
Sponsor: IARSLCE

National Urban Extension Conference 2017

May 8-11th, 2017
Bloomington, Minnesota
Sponsor: University of Minnesota

2017 CDS - NACDEP Conference

June 11-14, 2017
Big Sky, MT
Sponsor: CDS / NACDEP

Rural Community Investment

Deadline: Ongoing
Funder: CHS, Inc.

Community Building Grants

Deadline: Ongoing
Funder: Singing for Change

Sports and Community Development

Britain's Big-Sort Moment

Daily Yonder | [READ STORY](#)

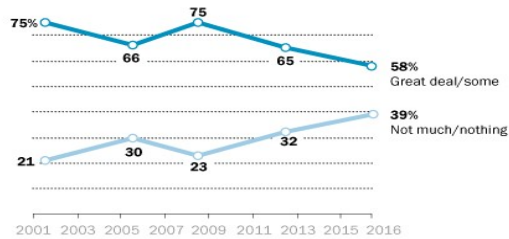
The Brexit vote in Britain looks familiar to folks who are watching the political divide in the United States. A map of the Brexit vote in Great Britain (on whether the country should leave the European Union) shows a pattern familiar to U.S. citizens. The cities voted one way (to stay) and the countryside voted the opposite (to Brexit). Like the United States, Great Britain is a country that is divided politically — and geographically.

Fewer Americans Believe Churches Key to Solving Social Problems

Pew Research Center | [READ STORY](#)

Americans appear to be growing more skeptical of how much of a difference churches and other houses of

worship make in tackling social concerns. About four-in-ten Americans (39%) now say religious institutions make little to no contribution in this area.



As Clouds Head for the Poles, Time to Prepare for Food and Water Shocks

[WRI](#) | [READ STORY](#)

A changing climate means less rain and lower water supplies in regions where many people live and much of the planet's food is produced: the mid-latitudes of the Northern and Southern hemispheres, including the U.S. Southwest, southern Europe and parts of the Middle East, southern Africa, Australia and Chile.

Paris Agreement: Getting Closer to "Entering into Force" this Year

[WRI](#) | [READ STORY](#)

If an additional 23 other nations follow through on their promises to join this year, countries representing about 54 percent of global emissions will have joined the Agreement, putting "entry into force" well within reach.

Deadline: Open
Funder: Adidas Group

Urban Regional Community Development Specialist

Creating Whole Communities
University of Missouri
Extension

Community Development Specialist

Department of Human Ecology
University of California Davis

National/International News

Protests Precede Brazilian Olympics

BBC, August 4th

Austrian Turkey, Austria Argue Over E.U. Membership

BBC, August 4th

Australia Commits to Climate Research

NY Times, August 3rd

Saudi Arabia Helps Stranded Indian Workers

Reuters, August 3rd

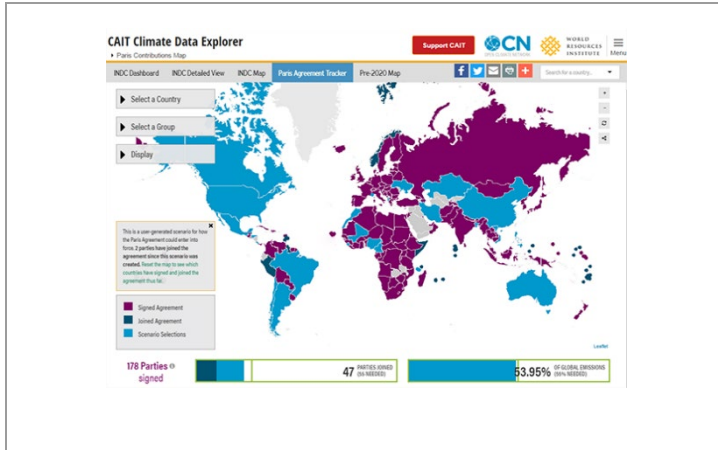
Montana News

Hardin Fire reaches 85% Containment

Billings Gazette, August 4th

Uber To Launch Across Montana

Billings Gazette, August 4th



Program Launched to Close Pay-Gap

KTVQ, August 3rd

Zika Virus in Yellowstone County

KPAX, August 4th



MSU Extension Community Development | Wilson Hall 2-117 P.O. Box 172240 | Bozeman, MT 59717-2240

Tel: (406) 994-3620

Back issues of the MACDEP E-news are available [here](#)

To subscribe to the Montana CD E-Newsletter, send a request to: commdev@montana.edu