



## COMMUNITY DEVELOPMENT

# e · n e w s

February 2017

## Reports & Resources

### Corruption Perceptions Index 2016 Transparency International | [READ STORY](#)

No country gets close to a perfect score in the Corruption Perceptions Index 2016. Over two-thirds of the 176 countries and territories in this year's index fall below the midpoint of our scale of 0 (highly corrupt) to 100 (very clean). The global average score is a paltry 43, indicating endemic corruption in a country's public sector.

CORRUPTION PERCEPTIONS INDEX 2016



### MT CD Update

[MACDEP](#) members are setting the stage for 2017. Thank you for your contributions to the executive and scholarship committees. In February, Pat McGlynn, Treasurer will be wrapping up the membership drive. The MSU Extension Community Development program will host University of Wyoming Extension Educators, Mary Martin and Kimberley Chapman for a Train-the-trainer event on EVOLVE, a curriculum and program for community-based leadership development. Micky Zurcher, Tara Mastel, Cody Stone, Jennifer Anderson, Katie Weaver, Mandie Reed, and Abbie Phillip will be attending. We appreciate the administrative and programmatic support for this training to aid the development of an MSU Extension Signature program, Leadership 406.

Abbie Phillip  
*2017 MACDEP President*

Interested in helping with the [2017 CDS-NACDEP Conference](#)? We need assistance securing support with sponsorships as well as volunteering during the Conference; please

## How the World Got Fat: A Visualisation of Global Obesity Over 40 Years

### The Guardian | [READ STORY](#)

Since 1975, obesity rates have risen in every country in the world, without exception. That includes countries like the United States and the UK, where food is cheap and abundant, and countries like Somalia and Angola, where malnutrition remains an epidemic.



## Two-Thirds of Americans Give Priority to Developing Alternative Energy Over Fossil Fuels

### Pew Research Center | [READ STORY](#)

A new Pew Research Center survey finds that 65% of Americans give priority to developing alternative energy sources, compared with 27% who would emphasize expanded production of fossil fuel sources.

email [me](#) for more information. The 2017CDS-NACDEP Conference registration page is scheduled to launch this week; check the association web pages for details.

[NACDEP](#) Award nominations are due March 3. You can nominate yourself, your co-workers, and/or your colleagues. If you have any questions, contact Michael Dougherty, the Recognition Committee Chair, at [michael.dougherty@mail.wvu.edu](mailto:michael.dougherty@mail.wvu.edu).

The Call for Applicants for this year's CDS Scholarships closes Feb. 24. Access the [online scholarship application](#) as well as eligibility and criteria. Please direct any questions to [Craig.Talmage@gmail.com](mailto:Craig.Talmage@gmail.com).

Paul Lachapelle  
*MSU Community Development  
Specialist*

### Upcoming Events

#### 2017 Association for International Agricultural and Extension Education Conference

April 24-28, 2017  
Minneapolis, MN  
Sponsor: AIAEE

#### National Urban Extension Conference 2017

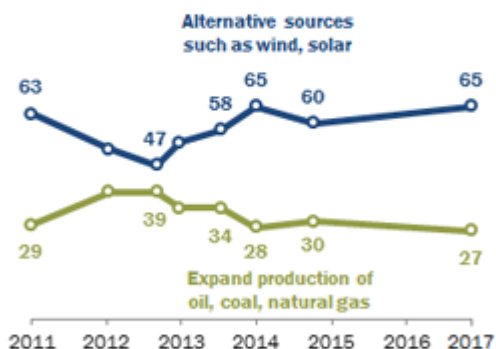
May 8-11, 2017  
Bloomington, Minnesota  
Sponsor: University of Minnesota

#### 2017 CDS - NACDEP Conference

June 11-14, 2017  
Big Sky, MT  
Sponsor: CDS / NACDEP

## Most in U.S. give priority to developing alternative energy over fossil fuels

% of U.S. adults who say \_\_\_\_ should be the more important priority for addressing America's energy supply

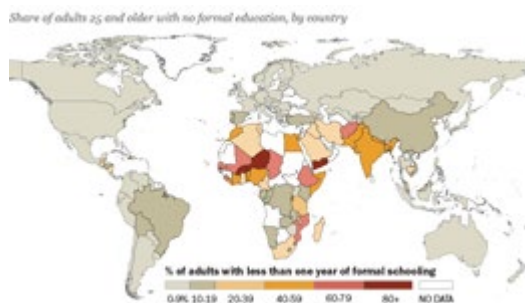


Note: Both/Don't know responses not shown.  
Source: Survey conducted Jan. 4-9, 2017.

PEW RESEARCH CENTER

## About One-Fifth of Adults Globally Have No Formal Schooling Pew Research Center | [READ STORY](#)

In many parts of the world, particularly in poorer countries, attainment of even the most basic education is still far from universal. Indeed, roughly one-in-five adults (19%) around the globe have no formal schooling at all, according to a recent Pew Research Center report on education.



## Grants, Awards & Jobs

### NEA: Art Works I

Deadline: February 16  
Funder: National Endowment for the Arts

### HHS: Partnerships to Achieve Health Equity

Deadline: March 31  
Funder: Office of the Assistant Secretary for Health

### Extension Program Assistant

Edgecombe County Extension  
North Carolina State University

### Community & Regional Economics Specialist

Extension Community Development  
Purdue University

### Development Officer

Extension/4-H  
University of Minnesota

## National/International News

### UN Refugee Chief Opposes 'Safe Zones' in Syria

ABC News, February 3

### Ferragamo Undeterred by US Import Tax Proposal

ABC News, February 3

### Fed's Evans Sees Fiscal Boost to U.S. Growth, Wants Slow Rate Hikes

Fox News, February 3

## Mapping the Flow of International Trade

### Visual Capitalist | [READ STORY](#)

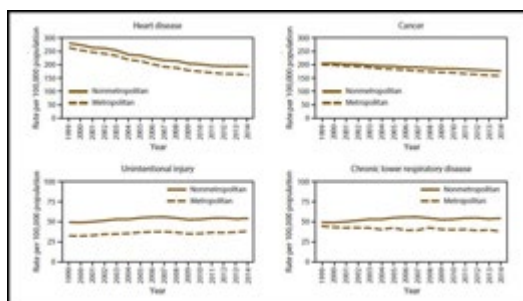
Trade is an essential part of economic prosperity, but how much do you know about global trade? Today's visualization helps to map international trade on a 3D globe, plotting the exchange of goods between countries. It enables the abstract concept of trade to become more tactile, and at the same time, the visuals make it easier to absorb information.



## The Top-Five Causes of Death Strike Rural Residents at a Higher Rate

### The Daily Yonder | [READ STORY](#)

Rural residents are more likely than metropolitan residents to die prematurely from cancer, respiratory disease, and the other most common causes of death, a Centers for Disease Control report says. The rate of premature death from unintentional injuries was 50% higher in nonmetropolitan areas from 1999 to 2014, the report said.



### [California Snowpack Heaviest Since 1995 as Drought Eases Further](#)

Fox News, February 3

### [German Foreign Aid Is at a Record High and Rising](#)

Devex, February 3

### [State-Level Decarbonization Lags Behind](#)

Planetizen, February 3

### [Oil Spill Near Chennai, India, Threatens Wildlife](#)

NY Times, February 3

### [Top Global Development Employers in New York City](#)

Devex, February 3

## Montana News

### [Parasite Associated with Yellowstone Fish Kill Detected in Big Hole](#)

KBZK, February 3

### [Theater Helps Teach Ecology in Missoula Classrooms](#)

KPAX, February 3

### [Montana House Endorses Bills to Loosen Gun Restrictions](#)

KULR, February 3

### [Colstrip Cleanup Measure Runs into Opposition](#)

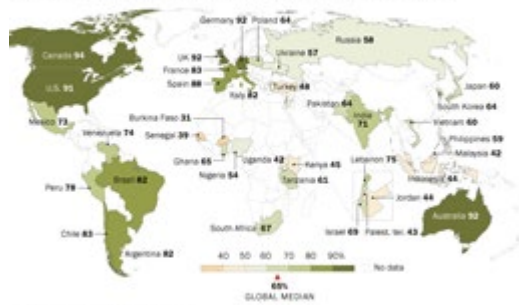
KULR, February 3

## Many Around World Say Women's Equality is Very Important Pew Research Center | [READ STORY](#)

The principle of gender equality is one that has taken root in many nations around the world. In a 2015 survey of 38 nations, majorities in all but one country (Burkina Faso) said it is somewhat or very important that women have the same rights as men in their society. And a median of 65% worldwide said these equal rights are *very* important.

### Most in North America, Europe and Latin America say gender equality is very important

% saying it is very important that women have the same rights as men in our country



Source: Spring 2015 Global Attitudes Survey.  
PEW RESEARCH CENTER

### Montana Medicaid Drug Program

KXLF, February 3

### Montana Soldiers Ready to Deploy to Southwest Asia

Billings Gazette, February 3

### Montana Residents Ask for Chance to Build High Schools

KPAX, February 3

### Livestock Groups Oppose Change to Wolf Funding Allocation

Billings Gazette, February 3



MSU Extension Community Development | Wilson Hall 2-117 P.O. Box 172240 | Bozeman, MT 59717-2240

Tel: (406) 994-3620

Back issues of the MACDEP E-news are available [here](#)

To subscribe to the Montana CD E-Newsletter, send a request to: [commdev@montana.edu](mailto:commdev@montana.edu)