



Speaker Bios
Montana WWAMI
Faculty Development Conference
April 12-14, 2024
Chico Hot Springs Resort



Heidi Combs, MD, MS

Heidi is a professor in the Department of Psychiatry and Behavioral Sciences at the UWSOM. She completed medical school and residency at the University of Washington. From 2006 -2017 she was the Psychiatry Clerkship Director for the UWSOM. She has served as the Inpatient Psychiatry Medical Director at Harborview Medical Center from 2011-2019. She was selected to hold the Stern Endowed Chair for WWAMI faculty development in 2019 and became the Vice Chair of Education for the Department of Psychiatry and Behavioral Sciences in 2020. Intensive inpatient psychiatric care is the focus of her clinical work. Areas of interest are acute psychiatric care, management of psychiatric illness in primary care, and medical education. Heidi's publication focus is on medical education.



Mark Deutchman, MD

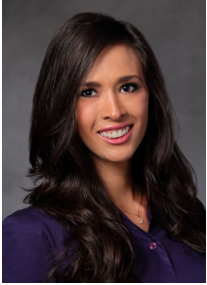
Mark is a professor in the Department of Family Medicine at the University of Colorado School of Medicine. He also has faculty appointments in the School of Dental Medicine and in the School of Public Health. He has been involved in rural medical practice or teaching for over 45 years. Mark practiced Family Medicine in rural Washington State for 12 years after completing medical school at The Ohio State University and residency in Spokane, Washington. After leaving rural practice he taught at the University of Tennessee, Memphis and developed an obstetrics fellowship for Family Physicians destined for rural practice. He has been at the University of Colorado since 1995 teaching medical students, residents and fellows and developed an obstetrics fellowship and a rural fellowship. In 2005 he founded the Rural Track in the School of Medicine, a program for students who are planning a career in rural medical practice. He is Associate Dean for Rural Health at the University of Colorado and has served in the past as Director of the Colorado Area Health Education system. His research and development efforts focus on rural healthcare workforce development, access to maternity care and interprofessional collaboration.



Laura Goodell, MD

Laura is an assistant professor in the Department of Family Medicine, UWSOM. A Montana State University Bobcat and a Montana WWAMI alumni (E03), she completed her residency at the Montana Family Medicine Residency Program in Billings and served as chief. After practicing rural medicine in Dillon, she moved to Bozeman to participate in academic medicine. Laura maintains a part-time clinical practice at University Health Partners at Montana State University. As a medical educator, she is committed to excellence. She teaches medical students in the Foundations Phase and supports WWAMI faculty as the STERN Regional Faculty Educator for Montana. When she is not at work, Dr. Goodell is a mother, wife and adventurer. She is supported by her husband Baldwin, son Oliver and daughter Beth.

Speaker Bios: 2024 Montana WWAMI Faculty Development Conference (page 2)



Stephanie Lyden, MD

Stephanie is the Associate Director for the Rural and Underserved Training Experience (RUUTE) for the School of Medicine at the University of Utah. A Casper, Wyoming native, she completed medical school at the University of Washington; neurology residency at Rush University Medical Center and a vascular/stroke neurology fellowship at the University of Utah. From growing up in a rural state, Stephanie has an interest in expanding access to specialized healthcare to rural and under-served areas. She likes the idea of using new technology, such as telemedicine, to help achieve this. Given this interest, she and the RUUTE team created a telemedicine elective for medical students and are working on additional telemedicine projects. She is also interested in expanding medical student experiences to include rural rotations, improving systems of care to allow for community outreach and enhancing educational efforts

The RUUTE Community Engagement Experience (CEE) that Stephanie directs places students in rural and underserved settings where they complete clinical preceptorship, a public health needs assessment for their assigned community and various other assignments that culminates in developing a population health intervention to address a health need they identified through their needs assessment.

During her free time, Stephanie enjoys hiking, backpacking, running, cross country skiing, interior design, architecture and spending time with her family (husband, Steven; son, Cam {3}; daughter, Mia {8 months} and great Dane, Abby.



Scott Shipman, MD, MPH

Scott is the founding ED for the Institute for Population Health, the inaugural CyncHealth Endowed Chair of Population Health at Creighton University, and the ED of the Institute for Population Health at Creighton. This university-level institute, launched in fall of 2023, partners with each of Creighton's undergraduate and graduate schools and its clinical partners in the Midwest and in Arizona, and with the many key stakeholders that influence health and well-being in our communities.

He spent the previous decade as director of Clinical Innovations and director of Primary Care Initiatives at the Association of American Medical Colleges (AAMC), where he worked with health system leaders to promote effective innovations in ambulatory care delivery and training. He led AAMC activities focused on telehealth innovations within teaching health systems. Scott established Project CORE (Coordinating Optimal Referral Experiences), a leading model of care that measurably improved quality, efficiency and access at the interface of primary care and specialty care. He oversaw the scaling of this model to more than 50 large health systems in more than 20 states across the U.S.

A pediatrician and health services researcher by training, Scott has studied the healthcare workforce and workforce policy extensively. He completed medical school at the University of Nebraska, residency at Dartmouth-Hitchcock, and a fellowship in the Robert Wood Johnson Clinical Scholars Program at Johns Hopkins, where he also received his MPH.



Maggie Watt, MD

Maggie Watt MD, CCFP, FCFP is the Expansion Director for the Integrated Community Clerkship (ICC) at University of British Columbia.

She is currently tasked with expansion of ICC clerkship placements across BC, particularly into rural communities. She has taught in the UBC Faculty of Medicine for the last 20 years and practices full service Family Medicine including hospital and obstetrical care in a rural community on Vancouver Island. Maggie is passionate about human connection in many forms: with students and colleagues, as a leader, with patients, and with friends and family (including her husband and 3 sons). She maintains her sanity by swimming in the ocean and joyfully moving her body outdoors.